

In → Subj = f(2.2)



Rue Mouffetard, Paris

In → Transj = f(2.2)



Place du Guignier, Paris

Ex → Adj = f(2.3)



Rue Mayran, Paris

Ex → Subj = f(2.3)



Rue Aubry le Boucher, Paris

Ex → Transj = f(2.3)



Rue de l'Annonciation, Paris

Ad → Adj = f(2.3)



Rue Eugène Oudin , Paris

Ad \rightarrow Subj = $f(2.3)$



Rue du P lican, Paris

Ad \rightarrow Transj = $f(2.3)$



Rue Casimir P rier, Paris

In → Adj = f(2.3)



Rue de Bazeilles, Paris

In → Subj = f(2.3)



Rue de Bretagne, Paris

In \rightarrow Transj = f(2.3)



Place Dauphine, Paris

Ex \rightarrow Ad = f(2.1)



Rue Théophile Roussel, Paris

Ex → Adj = f(2.1)



Rue Sait-Maur, Paris

Ex → Ex = f(2.1)



Rue de Ponthieu, Paris

Ex \rightarrow Ad = f(2.2)



Avenue Parmentier, Paris

Ex \rightarrow Adj = f(2.2)



Rue Mouffetard, Paris

Ex → Ex = f(2.2)



Rue de Charenton, Paris

Ex → Ad = f(2.3)



Rue de Charenton, Paris

Ex → Adj = f(2.3)



Rue du Temple, Paris

Ex → Ex = f(2.3)



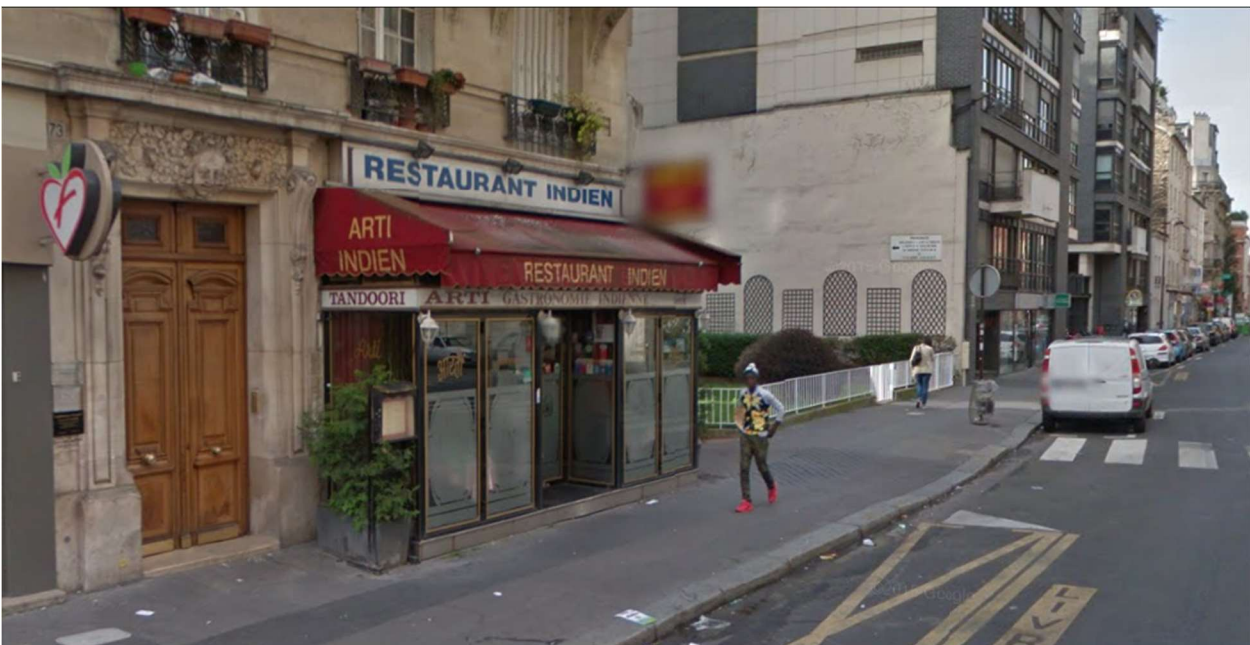
Rue de la Villette, Paris

Ad \rightarrow Ad = f(2.1)



Rue Saint-André des Arts, Paris

Ad \rightarrow Adj = f(2.1)



Rue Lecourbe, Paris

Ad → Ex = f(2.1)



Rue de Charonne, Paris

Ad → Ad = f(2.2)



Rue René Boulanger, Paris

Ad \rightarrow Adj = f(2.2)



Rue Letort, Paris

Ad \rightarrow Ex = f(2.2)



Rue des Francs Bourgeois, Paris

Ad \rightarrow Ad = f(2.3)



Rue de Rémusat, Paris

Ad \rightarrow Adj = f(2.3)



Avenue de New York, Paris

Ad \rightarrow Ex = f(2.3)



Rue Léopold Bellan, Paris

In \rightarrow Ad = f(2.1)



Boulevard Jourdan, Paris

In → Adj = f(2.1)



Avenue de Suffren, Paris

In → Ex = f(2.1)



Parc des Buttes-Chaumont, Paris

In → Ad = f(2.2)



Carrefour de l'Odéon, Paris

In → Adj = f(2.2)



Rue de la Terrasse, Paris

In → Ex = f(2.2)



Rue Gaston de Caillavet, Paris

In → Ad = f(2.3)



Parc des Buttes-Chaumont, Paris

In → Adj = f(2.3)



Rue Jacques Hillairet, Paris

In → Ex = f(2.3)



Rue Jean-Jacques Rousseau, Paris

Ex → PP = f(2.1)



Rue Compans, Paris

Ex → PC = f(2.1)



Rue François Miron, Paris

Ex → CP = f(2.1)



Rue de la Victoire, Paris

Ad → PP = f(2.1)



Rue Pergolese, Paris

Ad → PC = f(2.1)



Rue de Provence, Paris

Ad → CP = f(2.1)



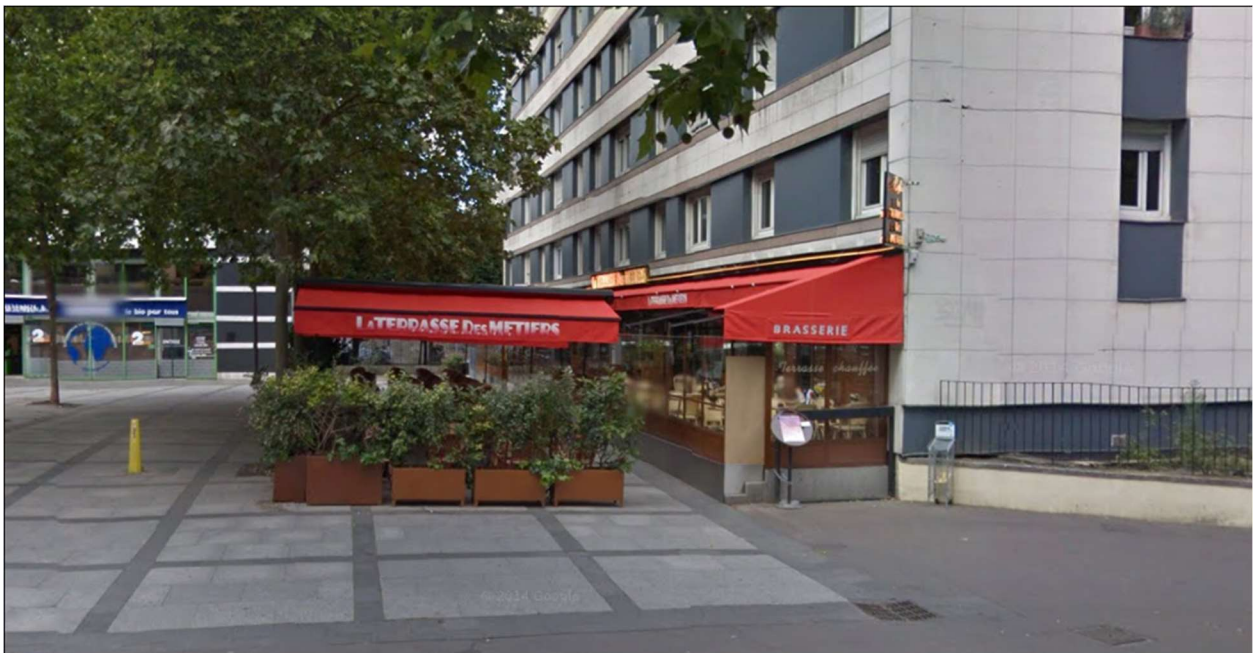
Rue de Bièvre, Paris

Ad → CC = f(2.1)



Rue Linné, Paris

In → PP = f(2.1)



Rue Jacques Hillairet, Paris

In → PC = f(2.1)



Parc des Buttes-Chaumont, Paris

In → CP = f(2.1)



Place Saint-André des Arts, Paris

In \rightarrow CC = f(2.1)



Parc des Buttes-Chaumont, Paris

Ex \rightarrow PP = f(2.2)



Rue des Abbesses, Paris

Ex → PC = f(2.2)



Place de la Contrescarpe, Paris

Ex → CP = f(2.2)



Rue Descartes, Paris

Ex → CC = f(2.2)



Rue Lamarck, Paris

Ad → PP = f(2.2)



Rue Bleue, Paris

Ad → PC = f(2.2)



Rue du Sentier, Paris

Ad → CP = f(2.2)



Rue des Bons Enfants, Paris

Ad \rightarrow CC = f(2.2)



Rue du Vertbois, Paris

In \rightarrow PP = f(2.2)



Avenue Montaigne, Paris

In \rightarrow PC = f(2.2)



Rue Elisa Lemonnier, Paris

In \rightarrow CP = f(2.2)



Rue Jean Lantier, Paris

In → CC = f(2.2)



Rue du Vertbois, Paris

Ex → PP = f(2.3)



Place Saint-Merri, Paris

Ex → PC = f(2.3)



Rue Racine, Paris

Ex → CP = f(2.3)



Rue de Saussure, Paris

Ex → CC = f(2.3)



Rue des Orteaux, Paris

Ad → PP = f(2.3)



Rue Mouffetard, Paris

Ad → PC = f(2.3)



Rue de Bellechasse, Paris

Ad → CP = f(2.3)



Rue de l'Annonciation, Paris

Ad \rightarrow CC = f(2.3)



Rue Montmartre, Paris

In \rightarrow PP = f(2.3)



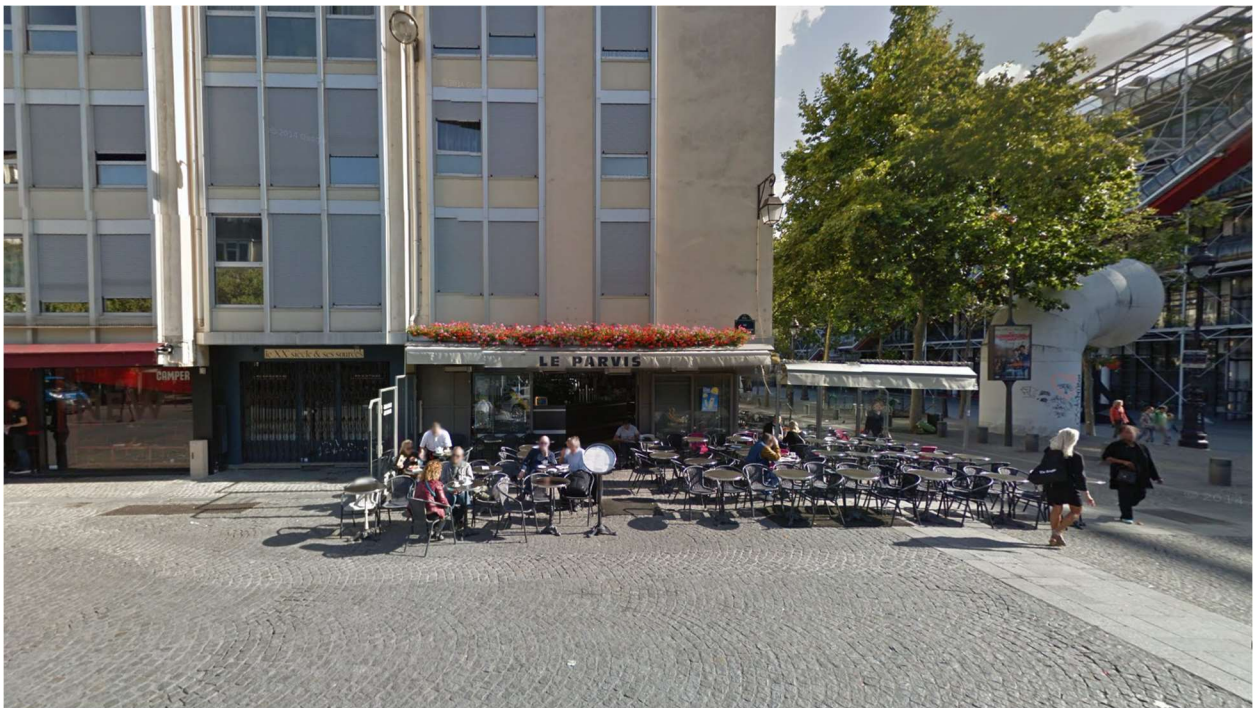
Rue Édouard Lockroy, Paris

In → PC = f(2.3)



Rue Henri Robert, Paris

In → CP = f(2.3)



Rue Aubry le Boucher, Paris

In \rightarrow CC = f(2.3)



Rue de Charenton, Paris

Koo \rightarrow Adj = f(2.1)



Rue Mezlay, Paris

Sub \rightarrow Adj = f(2.1)



Rue de Bercy, Paris

Sup \rightarrow Adj = f(2.1)



Rue de la Colombe, Paris

Koo → Subj = f(2.1)



Rue du Faubourg Montmartre, Paris

Sub → Subj = f(2.1)



Rue de Crimée, Paris

Sup → Subj = f(2.1)



Rue des Pyrénées, Paris

Koo → Adj = f(2.2)



Rue Notre Dame de Nazareth, Paris